

# INTRASTAT THRESHOLDS & DEADLINES

## CHANGES MADE IN 2025



WHITEPAPER

LAST UPDATED: 19 FEB 2025

PINCVISION.COM

## INTRODUCTION

Intrastat reporting is an essential part of statistical reporting within the European Union. It enables governments and policymakers to track trade flows between member states. Each year, intrastat threshold values are adjusted, making it crucial for businesses to stay updated to comply with reporting obligations.

Our Intrastat Specialist, Lisa Terberg - Widdershoven, has compiled the thresholds and deadlines per country for 2025, allowing you to easily check whether you are required to submit an Intrastat declaration in the coming year.

## WHAT IS INTRASTAT?

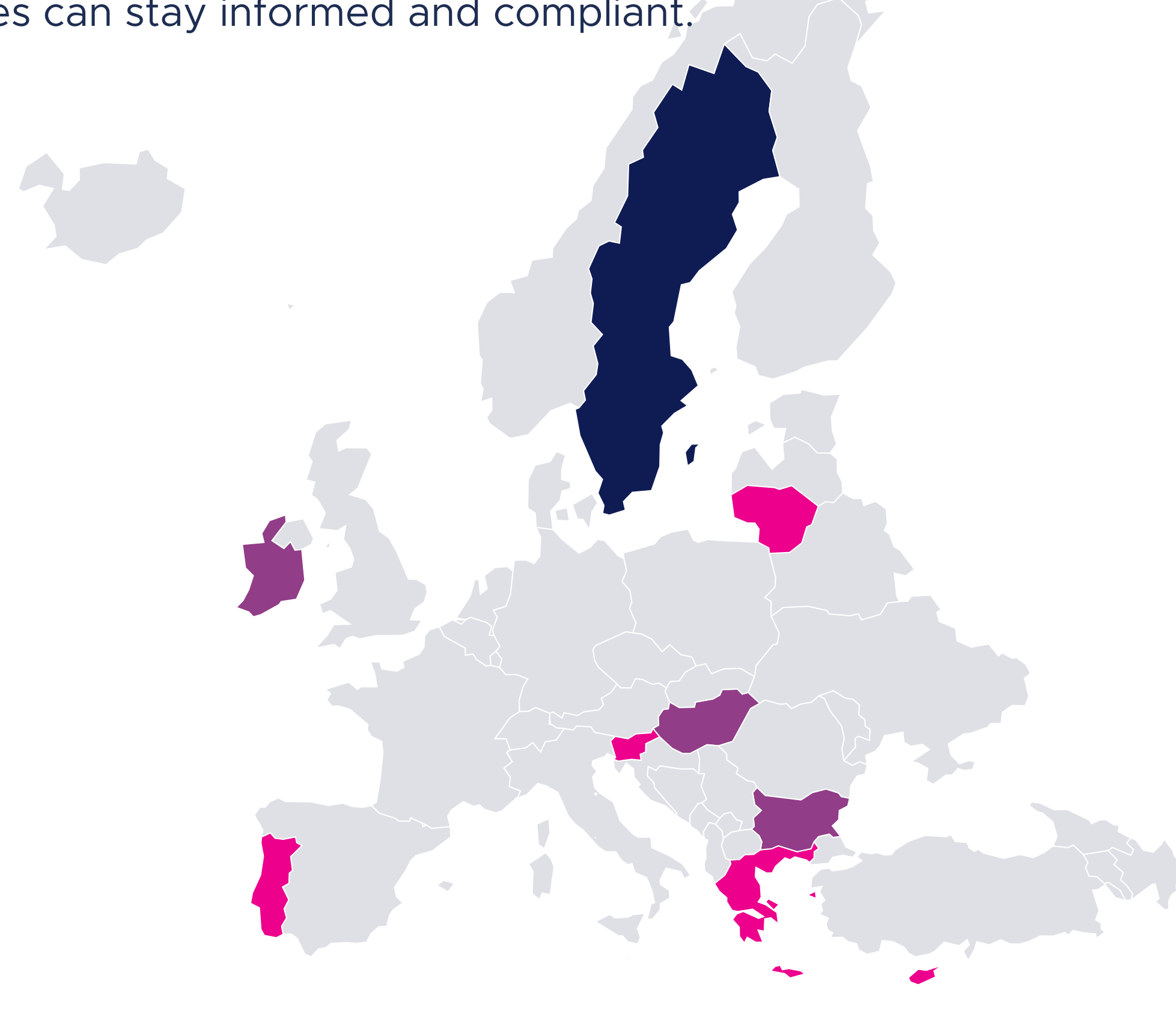
Intrastat is a system that requires businesses engaged in trade within the EU to report trade statistics once they exceed certain thresholds. Think of it as an 'export survey': if your company surpasses a specific threshold with its shipments or receipts within the EU, you are obligated to report this information to your country's statistical authorities. This helps the EU monitor trade flows and economic developments.

### Why is Intrastat Important?

- It assists in monitoring the EU's internal market.
- Governments use the data for economic and policy decisions.
- Businesses avoid fines by ensuring timely and accurate reporting.

## INTRASTAT THRESHOLD ADJUSTMENTS

Intrastat thresholds are reviewed annually and may change depending on economic conditions, trade volumes, and regulatory decisions within each EU member state. These adjustments ensure that trade statistics remain accurate and reflect the latest market trends. This document provides a complete overview of the 2025 thresholds, including all changes compared to the previous year, so businesses can stay informed and compliant.



Changes in:

- Arrival
- Dispatch
- Arrival & Dispatch

## CHANGES ARRIVAL AND DISPATCH

MEMBER STATE	ISO CODE	DEADLINE INTRASTAT	2024		2025		
			ARRIVAL	DISPATCH	ARRIVAL	DISPATCH	CURRENCY
Bulgaria	BG	14th of the month	1,650,000	1,900,000	1,700,000	2,200,000	BGN
Hungary	HU	15th of the month	270,000,000	150,000,000	400,000,000	160,000,000	HUF
Ireland	IE	23rd of the month	500,000	635,000	750,000	750,000	EUR

The Arrival and Dispatch thresholds have increased for these countries. We recommend reviewing if this adjustment affects your obligations in these regions. If it does, you will need to update your internal processes to remain compliant.

## CHANGES ARRIVAL

MEMBER STATE	ISO CODE	DEADLINE	2024		2025		
			ARRIVAL	DISPATCH	ARRIVAL	DISPATCH	CURRENCY
Cyprus	CY	10th of the month	320,000	75,000	350,000	75,000	EUR
Greece	GR	26th calendar day	150,000	90,000	200,000	90,000	EUR
Lithuania	LT	10th working day	550,000	400,000	570,000	400,000	EUR
Portugal	PT	15th of the month	600,000	600,000	650,000	600,000	EUR
Slovenia	SI	15th of the month	220,000	270,000	240,000	270,000	EUR

## CHANGES DISPATCH

MEMBER STATE	ISO CODE	DEADLINE	2024		2025		
			ARRIVAL	DISPATCH	ARRIVAL	DISPATCH	CURRENCY
Sweden	SE	10th working day	15,000,000	4,500,000	15,000,000	12,000,000	SEK

## YOU CAN FIND THE COMPLETE OVERVIEW BELOW

## NO INTRASTAT ARRIVAL OBLIGATION IN ESTONIA FROM 2025

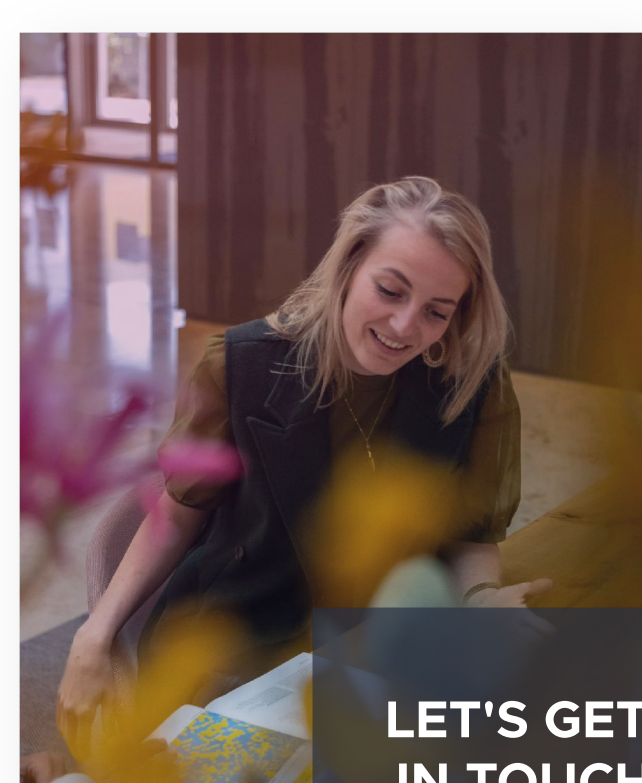
Currently, EU-based companies must submit monthly Intrastat declarations for goods crossing borders if they exceed annual statistical thresholds.

### Arrival Declaration Abolished

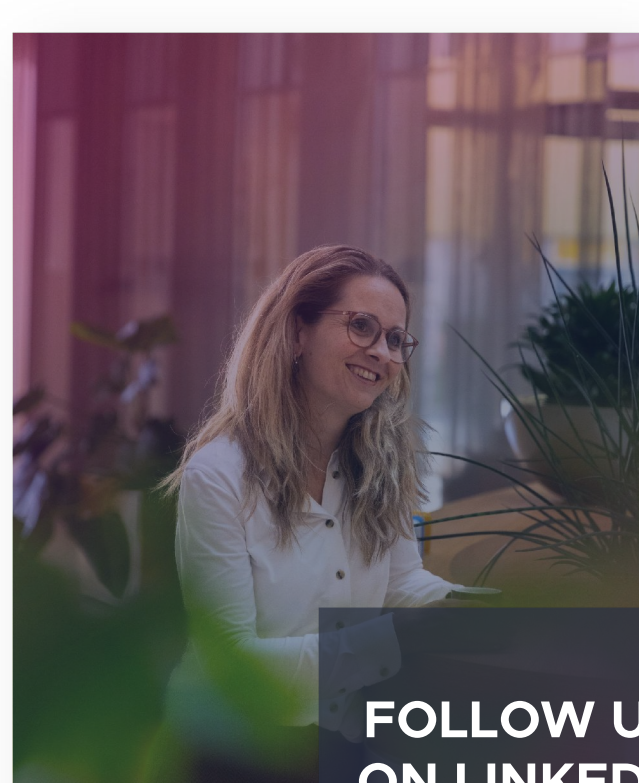
From January 2025, Statistics Estonia will no longer require Intrastat arrival declarations. After three years of analysis, they concluded that data from other EU Member States is sufficient for Estonia's import statistics. Companies are no longer required to report arrivals.

### Dispatch Obligation Remains

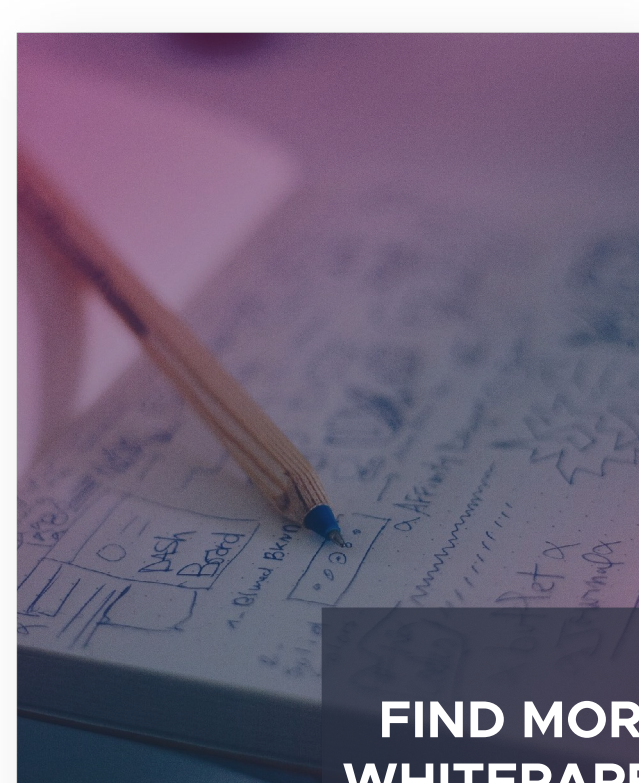
The statistical threshold for dispatches remains at €350,000. Companies exceeding this in 2024 must submit Intrastat data in 2025.



LET'S GET IN TOUCH



FOLLOW US ON LINKEDIN



FIND MORE WHITEPAPERS

## COMPLETE OVERVIEW

MEMBER STATE	ISO CODE	STATISTICAL AUTHORITY	DEADLINE INTRASTAT	2024		2025			CHANGES
				ARRIVAL	DISPATCH	ARRIVAL	DISPATCH	CURRENCY	
Austria	AT	Bundesanstalt Statistik Österreich	10th working day	1,100,000	1,100,000	1,100,000	1,100,000	EUR	
Belgium	BE	The National Bank of Belgium	20th of the month	1,500,000	1,000,000	1,500,000	1,000,000	EUR	
Bulgaria	BG	National Revenue Agency	14th of the month	1,650,000	1,900,000	1,700,000	2,200,000	BGN	Arrival + Dispatch
Cyprus	CY	Department of Customs VAT Service	10th of the month	320,000	75,000	350,000	75,000	EUR	Arrival
Czech Republic	CZ	Czech Customs Authorities	12th working day	15,000,000	15,000,000	15,000,000	15,000,000	CZK	
Germany	DE	Statistisches Bundesamt	10th working day	800,000	500,000	800,000	500,000	EUR	
Denmark	DK	Danmarks Statistik	10th working day	41,000,000	11,000,000	41,000,000	16,500,000	DKK	
Estonia	EE	Foreign Trade Statistics Service	14th calendar day	700,000	350,000	no threshold	350,000	EUR	
Spain	ES	Agencia Tributaria	12th of the month	400,000	400,000	400,000	400,000	EUR	
Finland	FI	Tulli	10th working day	800,000	800,000	800,000	800,000	EUR	
France	FR	Pro Douane	10th working day	no threshold	no threshold	no threshold	no threshold	EUR	
Greece	GR	National Statistical Service of Greece	26th calendar day	150,000	90,000	200,000	90,000	EUR	Arrival
Croatia	HR	Carina	15th of the month	450,000	300,000	450,000	300,000	EUR	
Hungary	HU	Hungarian Central Statistical Office	15th of the month	270,000,000	150,000,000	400,000,000	160,000,000	HUF	Arrival + Dispatch
Ireland	IE	Revenue	23rd of the month	500,000	635,000	750,000	750,000	EUR	Arrival + Dispatch
Italy	IT	Agenzia Dogane	25th of the month	350,000	0	350,000	0	EUR	
Lithuania	LT	Statistical office Lithuania	10th working day	550,000	400,000	570,000	400,000	EUR	Arrival
Luxembourg	LU	State service Luxembourg	16th working day	250,000	200,000	250,000	200,000	EUR	
Latvia	LV	Central Statistical Bureau of Latvia	10th of the month	350,000	200,000	350,000	200,000	EUR	
Malta	MT	National Statistic Office Malta	10th working day	700	700	700	700	EUR	
the Netherlands	NL	Centraal Bureau voor de Statistiek	10th working day	no threshold	no threshold	no threshold	no threshold	EUR	
Poland	PL	Statistical office Poland	10th of the month	6,200,000	2,800,000	6,200,000	2,800,000	PLN	
Portugal	PT	INE	15th of the month	600,000	600,000	650,000	600,000	EUR	Arrival
Romania	RO	Institutul National de Statistica	15th of the month	1,000,000	1,000,000	1,000,000	1,000,000	RON	
Sweden	SE	SCB	10th working day	15,000,000	4,500,000	15,000,000	12,000,000	SEK	Dispatch
Slovenia	SI	Carinska Uprava Republike Slovenije	15th of the month	220,000	270,000	240,000	270,000	EUR	Arrival
Slovakia	SK	Intrastat Statistics	15th of the month	1,000,000	1,000,000	1,000,000	1,000,000	EUR	
Northern Ireland	XI	HM Revenue & Customs	21st of the month	500,000	250,000	500,000	250,000	GBP	

## CONTACT US

T +31(0)88-4321800  
E info@pincvision.com

